



Inside this issue

New Village Agent 2

Village Carol Singers hit the high notes 2

20 is plenty in Ruscombe and Randwick 2

Calling all Creative Residents 3

Village Shop 3

Bread Street Party 3

Children's Page 4

Fun Page 5

Warm and Well 6

WARP 6

Parish Records 7

What is Co-operative Futures? 7

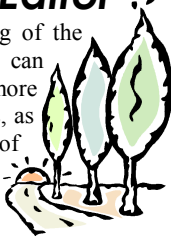
Volunteering 7

Parish Council Contacts 8

Scouts & Guide and Village Hall 8

From the Editor

With the re-opening of the A46, I am sure we can all now sleep more soundly in our beds, as we feel the benefit of reduced traffic flows through our village. It is fair to say that the closure of the A46 has also had an effect on the content of the last two editions of The WaRbler, which have been unusually dominated by issues of traffic noise and parking. So with the prospect of the warmer Spring days around the corner, this is the ideal opportunity to have a spring clean on the content of our parish newsletter.



The first edition of The WaRbler was published just over a year ago and John Rogers, the Chair of the Parish Council gave a strong message that The WaRbler was 'not to be a Parish Council newsletter' and that he would like to see the community contributing stories such as local history or ecological issues. At the public Annual Parish Meeting in May last year, people gave a very positive response to The WaRbler's content and we are very keen to use those suggestions and to give YOU the community a chance to give us your news, views and opinions.

In this edition, we have tried some new ideas and we hope you like them:


- A children's page
- News from our new Village Agent
- The Annual Parish Meeting in May
- Puzzles , cartoons and Limericks
- News of the Village Shop

Plus all the regular news. So please see Editor contact details on the back page, if you would like to get in touch and make The WaRbler your magazine! - Ed

**Tai Chi for the over 50's—
an exercise session for
Health, Relaxation, Posture
and Balance**

The class is held in Whiteshill Village Hall on Tuesday afternoons from 2.30 -3.30 pm. £3.50 per session. This will be followed by tea and biscuits for a small extra charge for those who would like it.

New members welcome. Why not come along for a taster!



If you would like to speak to me in confidence please ring me or if you can help with lifts please ring **JUDY NEWMAN** on 07776 245791

New Village Agent



My name is Judith Newman and I would like to introduce myself as your new Village Agent. You are probably familiar with

Pam Thorne, who was your agent until October of last year, and who I replace. I hope to carry on where she left off, and I aim to start by getting to know where to meet people, in your local groups, your village halls and shop and also the church. You will see me around your village and I may also be found in Whiteshill village shop or, perhaps, in the mobile library queue.

My role as a Village Agent is to provide older or disabled people in your community with information and support they need to ensure their well-being. I can put them in touch with the voluntary and statutory services which provide health care, transport, home safety checks and many other provisions which can prevent older and disabled people from feeling isolated. I will keep giving you regular updates on where I can be found and what I am doing. I can be contacted on **07776 245791** or for help with older people issues, you can ring the Adult Helpdesk on **01452 426868**

Village Carol Singers hit the high notes!



Our thanks to everyone who gave to our carol singers this Christmas, you helped to raise a staggering **£286.84**. No one can remember how long our impromptu group has been carol singing for Cotswold

Care Hospice but over the last ten years, we have collected **£1420** for this important local charity. We would especially like to thank anyone who bravely stood in their doorway to listen to our efforts – we try to be tuneful but don't always manage it! A special thank you to two little children in Lower Street who made our evening by clapping heartily after we sang 'Away in a Manger'. We may have been feeling cold on the outside but their enthusiasm gave us a warm glow! Our thanks also to Terry & Jenny for the mince pies and mulled wine, which was much appreciated. And finally a big thank you to Roger and Mu at The Star for their warm welcome and kind hospitality and to the regulars who always dig deep into their pockets as we coax them to join in with us. The rendition of the 'Twelve Days of Christmas' improves each year! Our group will reform a few days before Christmas 2008 – why not join us? **Maggie Booth**
Tel: 758621

20 is Plenty in Ruscombe and Randwick

Sorry but a traffic item has crept into this issue! You may remember that there was a proposal for a 20mph zone covering the whole of Randwick and Ruscombe which was objected to by the police on the grounds that too few people would obey it. Well we are co-operating with Randwick Parish Council on implementing a voluntary "20 is plenty" scheme covering Randwick, Ruscombe Road, Bread Street and Lower Street. This is basically a speed awareness campaign and in order to judge its effectiveness we need to have 'before and after' speed measurements. We need volunteers to do this and basically we need groups of two people who are prepared to use a speed gun to measure traffic speed for a period of 1 to 2 hours in the

morning or evening and then repeat the operation when the scheme is in place. Some of us did this on the main road a couple of years ago and it really is quite easy to do. **If you are interested in getting involved please e mail me or phone John Rogers on 01453 759223**

Calling all Creative Residents!

Some of you may notice the old photograph of an art exhibition in the Village Hall, I would like to re-stage this as part of the Hall's centenary next year. I know that there are a lot of talented and active artists and craft people in the village whom, I hope, would like to exhibit their work.



I am not asking for an exhibit now, but I thought that you may like a bit of notice if you would like to produce something with a village theme.

Please contact John Rogers on 01453 759223

PS It would be fun to have a music and poetry afternoon if anyone fancies taking part in one. JR

Bread Street party

Some residents in Bread Street want to hold a Street Party in the summer this year. Many people have moved into the area in recent years and it is hoped to have a good time and also give newcomers and old timers a chance get to know each other better.

Do please contact Philip Booth if you think you can help organise: 01453 755451.



Ruscombe & Whiteshill Village Shop

The Village Shop has had a difficult time since the fire in November, but we are now feeling the benefit of so many kind



people who have rallied round and helped us. We have not been put off by this vandalism which nearly closed the shop, but we stayed open right through! Thanks to our volunteers for bearing with the inconvenience and discomfort during this time. You may have noticed that the building has now been repaired to a very high standard – a massive ‘thank you’ to Brian Gardiner for this.

We have many others to thank for on-going and temporary repairs, among them Mike Begley, Damien and Tom Lucarotti. Unfortunately the much used disabled toilet had to be removed and we are working hard to raise funds to replace it. We are considering constructing a more permanent brick built toilet block. The sum raised to date is approx £1,500 which includes generous donations from the Whiteshill Village School and the Whiteshill Playgroup. If you would like to donate to the campaign, raise funds for us or would be willing to offer your building or labouring skills, then please ask for details in the shop. If anyone can help the Committee with experience in applying to grant making trusts or general fundraising, we would also be pleased to hear from you.

For these and any other enquiries please telephone the shop on 01453 766277.

CHILDREN'S PAGE



Class 4 pupils of Whiteshill School recently produced work on the closure of the A46 and its effects on local residents. Here is an extract of the interview with Cllr Philip Booth, District Councillor for Ruscombe and Whitehill.

“On Monday 21st of January 2008 Philip Booth, who is a District councillor for Whiteshill, Ruscombe and Randwick, came in to Class 4 to talk about the A46 closure and how it has affected him and the local people.

We asked Mr Booth how long he thought the A46 would be closed for? He replied, “It was meant to take 6 months, but it has taken a bit longer.” He went on to say that the road was due to open on February 15th. We also asked him whether the road closure had made his job more stressful? He answered, “No it hasn’t made my job more stressful, but there’s been a lot more phone calls and letters”. He also said that because there’s more traffic, people didn’t seem to care about any one else but themselves. People have been driving a lot faster and during a recent survey he had found 63 cars that were going over the speed limit. So Mr Booth thought that we need to find a way to slow cars down and make the drivers more caring for the villages. Philip Booth said we should make drivers go the diversion way.

By Emily & Cordelia “

The whole project can be found on the school website

http://www.whiteshill.gloucs.sch.uk/p_A46class4.ikml

Stroud District Youth Council

The Stroud District Youth Council was founded in 2000 in order to give a democratic voice to the young people in the Stroud District who have an opinion but no means by which to express it. In other words, young people aged 11 to 18. The Youth Council elects its own Youth Cabinet, whose members "shadow" members of the Stroud District Cabinet. Uniquely, these members have the right to attend Cabinet meetings and can take part in debate.

Freddie Whittaker writes

The Stroud District Youth Council has been busy over the last few months on our “litter recycling pilot project”. The project involves the purchase and placement of several specialist recycling units across many different sites in the Stroud District, sites identified as litter hotspots by members of the youth council and by The SDC Public Spaces Team. Funding for the venture was received in a generous grant from the Stroud Local Strategic Partnership last year and the project group within Stroud District Youth Council leapt to action and identified the bins they wanted and the places they wanted to put them.

We at SDYC believe that recycling is a very important issue affecting young people. It is not only one of the most accessible ways to save the environment but it also confronts environmental issues that we will have to confront when we get older. After all, we are the adults of tomorrow.

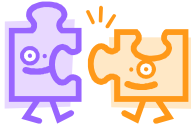
**Freddie Whittaker
Leader, SDYC
(Farmhill)**

**For More information
<http://>**

www.youth.stroud.gov.uk/default.asp?pid=1



FUN PAGE



Village Word Search

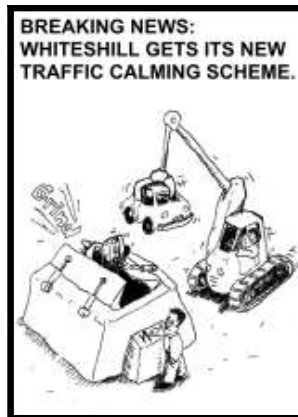
G H X A K R A T S O
 L L I H S E T I H W
 R U S C O M B E J Z
 S W M E M O R I A L
 W C P B E A C O N W
 Y R H O C H U R C H
 U Y G O H T W A R T
 D O O W O S B W X T
 S T P A U L S G U J
 H A R E S F I E L D

SHOP	HARESFIELD
BEACON	STAR
STPAULS	CHURCH
WOOD	WAR
MEMORIAL	WHITESHILL
RUSCOMBE	SCHOOL

There once was a reckless young driver
 Who drove his car like a jet-fighter
 When told '20 is plenty'
 He slowed his speed to twenty
 And now drives as slow as a glider
 (Gerri Kimber)

There was a fast driver called Leigh
 Who wrapped her Porsche round a tree
 The damage was major
 They could only just save her
 Now she thinks '20 is plenty for me'
 (Ralph Kimber)

TRAFFIC CALMING - your Parish is considering all the options...



Cartoons contributed by a local scribbler, Russ

We hope you like the limericks and cartoons on the '20 is plenty' theme. If you can think you can do better then we would like to hear from you. They can be on any topics which relate to the village, please let us know! **Ed**

Did you know the average uninsulated house loses over 50% of its heat through lofts and walls?



Most households could save £200 per year (see weblinks below) by installing energy efficiency measures like loft insulation and cavity wall insulation. Gloucestershire Warm and Well offers the opportunity to improve the energy efficiency in your home and reduce associated health problems caused by the cold. We have helped to improve over 11,000 properties in the county since 2001.

Although most people are aware that a cold home is detrimental to health, few people appreciate how serious the consequences can be. Asthma, heart disease and strokes are often linked to cold damp homes. This can be a real problem for the older and other vulnerable groups. Gloucestershire Warm and Well helps to raise awareness of the issues and provide advice.

The scheme is available to people who own their own home or rent from a private landlord. Currently householders over 70 years old are entitled to free loft and cavity wall insulation, regardless of their income. Grants are also available for the under 70's – for more details contact us on **0800 512 012**.

Advice on saving energy in the home and information about Gloucestershire Warm and Well is available from the Gloucestershire Energy Efficiency Advice Centre. We are also happy to come and talk to community groups and organisations, please call **0800 512 012** for more information.

www.nationalinsulationassociation.org.uk/housholder/householder-nia.html

www.energysavingtrust.org.uk/what_can_i_do_today/top_10_energy_saving_measures

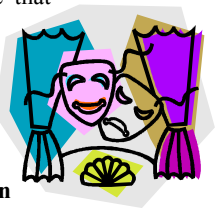
Whiteshill and Ruscombe Players

WARP or The Whiteshill and Ruscombe Players have been staging performances ranging from 'Singalong Sound of Music' and 'Life of Norman' to various variety shows since the 1980's. These days the shows are performed in Whiteshill Village Hall and usually run for two nights - each night being a sell out. The most frequently asked questions are 'why can't you run for three nights'? And 'when is the next show'?

The answers to both these questions is all to do with the time commitment of our members. Maggie Booth and Chris Birt, who brilliantly directed the most recent shows, are busy with their day jobs and directing good shows takes time and can be very demanding. It can also be very rewarding. There's no money in it other than our profits which go to local charities, but the feeling you get on the last night of a good show, is one that money can't buy.

Is there anyone out there that could direct a village show or take part? Whatever your interests; music, comedy, dance, stage design, give us a call.

I'm Peter Hood on Stroud 759809.



**You are invited to the
ANNUAL PARISH MEETING
on 22nd May 2008
at Whiteshill Village Hall
at 7.30 pm
Refreshments will be served
after the meeting**

From the Parish records

The very first Whiteshill Parish Council (which became Whiteshill & Ruscombe PC in 1986) was formed on 27th December 1894, and the following were elected councillors:



Robert Asher
George Sidney Cull
Edwin Franklin
John Harper
Jonathan Hogg
William Newcombe
Alfred Pearce
Edwin Saunders
George Smith

Are you a relative of anyone listed? Do you have any photos or family stories? Please contact the Parish Clerk, email: clerk@whiteshillandruscombe.org.uk. Thank you!

Volunteering is good for you and for your community!

Are you a good organizer / a good listener?
 Are you interested in helping people?
 Are you interested in giving your time voluntarily?

Your local community would appreciate the help of volunteers to run an afternoon club for the older people in your village or even help in the Village Shop . (see contact number on page 3).

Volunteer drivers are also needed to give free or low cost transport help. **Judith Newman**
 — 07776 245791

What is Co-operative Futures?

Co-operative Futures offers free information, support and advice to anyone that would like to set up a community group enterprise such as a community shop, cafe or child care group. Co-operative Futures have been contracted by the County Council to provide this service to new, emerging and existing social enterprises in Gloucestershire. CF can be contacted on 01452 543030 or www.co-operativefutures.coop



Gloucestershire County Council are proposing to withdraw the evening service for the Number 46, currently financially supported by Gloucestershire County Council.

Their website says "When we introduced the evening service in 2005 it was well supported. However recent analysis of the route has been disappointing indicating poor passenger support over the last six months. We therefore cannot justify continuing to fund the evening service balanced against passenger usage. The last day of operation of the evening service will be 29th March 2008."

I wonder if some might consider emailing protests to:

Busconsultation
@gloucestershire.gov.uk
Or telephone: 01452 425985

Parish Council Contacts

John Rogers (Chairman)

john.rogers@whiteshillandruscombe.org.uk

**Mrs Julie Shirley 60 Hawk Close,
Abbeydale, Gloucester, GL4 4WE
Telephone 01452 424245, email
clerk@whiteshillandruscombe.org.uk
PLEASE VISIT THE WEBSITE to view
Agendas and Minutes at
whiteshillandruscombe.org.uk**

SOME USEFUL NUMBERS

Council Direct—01452 505345

Adult Helpdesk—01452 426868

**Children and Families Helpdesk -
01452 426565**

**Gloucestershire Highways—0800
514514**

**GUIDE—health, social care and dis-
ability information—0800 444000**

Fire & Rescue—01452 753333

Police—0845 090 1234

NHS Direct—0845 4647

Village Hall Activities

MONDAY Line Dancing 15:00 to 16:00

Yoga 18:00 to 19:00

Keep Fit 19:30 to 21:00

TUESDAY Tai Chi 14:30 to 15:30

Lindy Hop dancing 19:00 to 21:00

10:00 to 12:00 **Pilates** (please ring number below)

WEDNESDAY Art Class 14:00 to 16:00

THURSDAY Mother and Toddler Group

10:00 to 12:00 **Wives Group** First Thursday in month 19:00 to 21:00

Parish Council Second Thursday in month 19:30 to 22:00

FRIDAY Ballet 16:00 to 18:00

Please check the village hall notice board for confirmation of times.

For more details and booking enquiries please ring

Mrs Bremerkamp on 759023

WHITESHILL GUIDE & SCOUT HEADQUARTERS

MONDAY –

Brownies - 18:00 to 19:30

Contact: Julie Jones – 821218

Guides – 19:40 to 21:10

Contact: Jessica Brereton – 762469

TUESDAY –

Cubs – 18:30 to 20:00

Contact: Christine Clatworthy – 758982

THURSDAY –

Beavers – 18:00 to 19:00

Contact – Ruth Woodley – 758620

WHITESHILL PLAYGROUP –

Meet on four mornings each week.

Contact: Sarah – 752094

PRIVATE BOOKINGS

The hall can be booked for children's parties, clubs and societies. Excellent kitchen. Good Parking and close to playing fields.

Contact: David Howell - 762088

For letters and all newsletter contributions please send to The Editor, 'Ashbourne', Star Green, Whiteshill, Stroud, GL6 6AE or email to: warbler@whiteshillandruscombe.org.uk

**COPY DEADLINE FOR THE NEXT EDITION OF THE WARBLER
Thursday 3rd July**

ADVERTISING

If you would like to advertise your business here, please forward items to The Editor at the above contact. Ads start at £10 per 1/8 page and £20 per 1/4 page.

**Make cheques payable to:
'Whiteshill and Ruscombe Parish Council'**