



Inside this issue

New Parish Councillors

From the New Clerk

From Cllr Philip Booth

Hedgehog Warden Wanted

The Global Bee Project

Parish Plan Supplement

Were you married in St Paul's church?

R&WVSA Report

Ruscombe Reckers

Rev Denise Cole

Parishes Flower Festival 2011

Some amusing anagrams

New Yoga Class

WG&SSA BBQ—10 July

Parish Council contacts

WG&SSA AGM 21.9.10

Hall Activities

Dear Resident

- 2 As you may have noticed Gloucestershire Highways authority have changed their minds about allowing our '20 is plenty' signs to be permanent and have removed most of them. Police speed surveys showed that these signs did greatly reduce the number of cars breaking the 30 mph limit.
- 3 We consider the current 30mph speed limit to be excessive (so too do Gloucestershire Highways but who have no proposals to do anything about it). It causes the road to divide our community and deters use of the main road by cyclists, pedestrians and drivers of mobility devices.
- 9 Our County Councillor is raising the issue with the appropriate committee on the 17 July. In order to support him of we are collecting signatures to the following petition:
- 10 *We the undersigned deplore the recent removal of our "20 is Plenty" road signs from Main Road Whiteshill by Gloucestershire Highways and want a mandatory 20mph speed limit imposed throughout Whiteshill and Ruscombe.*
- 11 *These signs did cause drivers to slow down. We consider the current 30mph speed limit to be excessive; it causes the road to divide our community and deters use of the main road by cyclists, pedestrians and drivers of*

mobility devices. It also increases the risk of fatalities. If a person is hit by a car at 30 mph they have a 55% chance of survival, at 20mph the chance of survival increases to 95%. A 20 mph limit will enable children and older villagers to safely cross the roads to access facilities such as the village school, scout hut, village hall, shop, playing field and pub.

We hope to take the petition door to door but if we miss you, you can also sign the petition at the Village Shop, The Star or online at:

<http://petition.co.uk/20-mph-speed-limit-in-whiteshill-and-ruscombe>

To do this, simply fill in your name address and email, copy a case sensitive code from the web page into the signature box. You should then receive an email from the petition organisation with a link that you have to use to confirm that you want to sign it (don't worry it is a lot easier to do than to explain).

This campaign is supported by our County, District and Parish Councillors and is consistent with Government policy. With your help we may just win. Thanks.

John Rogers

PS Please pass this on to anyone who may be interested



New Parish Councillors

After many years service on the Parish Council John Mutton stepped down at the recent election. John has been a tireless champion of both the school and the elderly and was an active member of the council who helped ensure that we kept our feet on the ground. We have two new councillors Vanessa Price and Nigel Smith who I look forward to working with.

The other important change in personnel is our new clerk. Julie Shirley left us in June having worked diligently for us for 3 years. In which time she set up our web site, helped set up the WaRbler (and printed it) was our contact point with Highways on the '20 is plenty' scheme and grit supplies, got the Grant from the Big Lottery Fund for work on the allotment and tried to get our procedures up to date. Although not a resident she clearly developed a passion for the village that was beyond that which you may expect from an employee. She is a hard act for Helen to follow, but from Helen's short time in the job I feel that we are in safe hands and I am sure the village will support her in her work.

We had an election for the new Parish Council in May. Unfortunately SDC sent out the wrong results to the Parish Clerk and replaced the correct results with the wrong ones on their Web site, however the returning officer (David Hagg) has issued an official apology and conducted an investigation into the reasons for the errors and confirmed that the results are now correct. What the election did show that unlike most villages we had more people prepared to serve on the council than places which shows that people are interested in the future of our village.

John Rogers (Chairman)

The elected Parish Councillors are:

John Rogers - Chairman
 Rebecca Charley - Vice Chairman
 Peter Hood
 Gerri Kimber
 Greg Dance
 Steve Tomkins
 Louise Scott
 Vanessa Price and Nigel Smith are the
 2 newly elected Councillors

Hello from the new Clerk

Hi, my name is Helen Dunn and I am the new Clerk to Whiteshill and Ruscombe Parish Council. I would like to say thanks to Julie for giving me a smooth handover. I look forward to working in the Parish and meeting many of you in the future.

My contact details are 23 Tennyson Road, Dursley, Glos GL11 4PZ, the e-mail and phone number remain the same. (see back page for details).

I have met some of you at the Parish Plan coffee morning – please look out for further developments with this plan. (see the Supplement in the middle pages).

I have started to compile a list of parishioners' e-mails so that the Parish Councillors can inform the community of events happening. If you would like your details added to this list, please e-mail me. Your details will only be used for Parish information.

Helen Dunn (Clerk)

**THE DEADLINE FOR THE
 NEXT EDITION OF THE
 WARBLER IS
 17th September 2010**

From Cllr Philip Booth



A huge thank you to all those who voted for me in the District Council elections. I was returned with 68.5% of the vote, with 77% turnout. This is a wonderful endorsement and indeed encouragement to build on the successes we've had locally. It is great to be part of this community but there is still much we can do to improve and strengthen it. Not all folk are so fortunate and the economic, environmental and social challenges we face are enormous - and growing. But there are also opportunities. For example borrowing to invest in renewables means cutting long term costs, cutting carbon, building energy security and creating local jobs.

We must also ensure any cuts don't hit the more vulnerable in our society. Britain has become one of the most unequal societies in Europe - but it is not just the poor who suffer from the effects of inequality. Indeed research shows that the bigger the gap the worse it is for all of us with increases in mental illness, drug and alcohol abuse, crime, shorter lives and greater levels of consumption. Even richer people are happier in more equal societies! Of course the District Council plays a limited role in these matters but there is still room to make some important changes.

News that regional strategies and centrally imposed building targets have been abolished probably reduces the threat of development of the fields in the Ruscombe Valley - but the pressures for more housing remain. Councils may have more freedom to decide but we need to see what that will mean in practice. There is also work to be done to tackle speeding traffic in our village, improvements to flood management and more.

Do please contact me if you have a query, problem, project or idea. Do also keep in touch by reading my daily blog which now has over 2,400 entries covering local projects, campaigns, meetings and more - see it at: <http://ruscombegreen.blogspot.com/>

Hedgehog Warden wanted!



As a Hedgehog Warden you will need to try and collate any information you can in the village on hedgehogs and their whereabouts. The plan is to plot the local hedgehog population on a google map so we will need postcodes of where there are hedgehogs / mums and babies are particularly important. In September the Hospital will try to weigh babies and get in any under 600g (otherwise they will die in hibernation). Lastly they are also plotting accident black spots and hedgehog deaths. **Contact: Cllr Philip Booth, Stroud District councillor for Randwick, Whitehill and Ruscombe ward, 2 The Laurels, Bread Street, Ruscombe, Stroud, GL6 6EL Tel: 01453 755451.**

Email: philip.booth2@virgin.net

And finally a thought from 'Russ our Local Scribbler'....



The Global Bee Project — you can get involved!



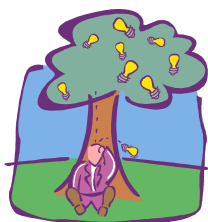
“The Global Bee Project is a locally based initiative dreamt up in Stroud by Italian/English couple Carlo Montesanti and Jessie Jowers. Motivated by their passion for wild bees, the two have set out to create a community of Bee Guardians that stretches across Gloucestershire, and the wider world. “We really wanted to build a bridge between the public and the scientific community,” says Jessie, “and show people that you don’t have to be a conservationist to change the lives of wild creatures. When it comes to saving and creating habitat for wild bees, EVERYONE can make a difference: in fact, it’s crucial that ordinary people get involved.” “Solitary bees are non-aggressive and are really safe to have around children, because they don’t live in hives, and don’t have honey to protect, they don’t swarm and have not developed the need to sting.

“We’ve got approximately 250 species of bee in Britain. One of those is the honey bee, 24 species are bumble bees - 3 bumble bee species have recently become extinct, and the rest are solitary pollinators such as

miner, leaf-cutter, mason bees and all manner of other insects, who tuck up inside hollow plant stalks, beetle holes and dead wood. Solitary bees are not social bees like honeybees, but live clustered together each in their own little hole, much like humans live in apartment blocks. “Intensive agriculture has destroyed their habitat in the countryside,” says Jessie. “because hedgerows are cut down, pesticides are used and land is ploughed up. Comparatively, towns and cities have become safe havens for wild bees, all year round, so it’s really important to make our gardens and urban green spaces as friendly to them as possible.” The Global Bee Project encourages everyone to plant bee-friendly flowers and build bee nest boxes in their gardens. Schools, universities, town councils and community organisations are jumping on board to transform public spaces into bee-friendly havens. Global Bee Project has just collaborated with Gloucestershire University to plant a wildflower meadow and build bee boxes. “The red mason bee is 120 times more prolific as a pollinator than a honeybee!” Jessie said. Building your own bee boxes for solitary bees is really simple, so furnish yourself with wood and a drill; full instructions on making bee boxes are at www.globalbeeproject.org. The Allotments Association and Parish Council are interested in associating with the global bee project to help with their work.

The Cotswold Conservation Board looks after the Cotswolds Area of Outstanding Natural Beauty on behalf of those who live, work and visit the area. Conservation work takes place across the AONB to protect habitats and all the species that rely on them
www.cotswoldsaonb.org.uk





PARISH PLAN
Coffee Morning
Supplement—15 May
2010



Firstly a big thanks to all of you who came along. As you will see from this supplement, there were a range of ideas put forward. We are actioning some of the non controversial ones like forming an email list and trying to get a film screening but others will need the wider endorsement of the whole village. The idea gathering has not stopped and if you want to help set the agenda for the future please volunteer to be on the Steering group. (see not on page 8).

One thing which was clear from the coffee morning was the desire for a community event like the old Street Fare. This set me thinking how many community events that were there last year—here are a few of them from the top of my head:

- Pancake Race and Easter egg hunts organised by the shop
- Art Show organised by the Village Hall
- Whitestock music festival organised by the friends of the school
- Bread Street Street Party
- Charity boot sale at the Star
- Concert in the church
- Screening of "Life of Norman" by WRAP
- Christmas fare at the shop and school
- Carol singing at the village hall and around the houses and
- Boxing Day walk

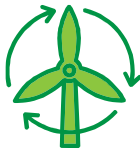
The point is we do have a lot of community events but I guess people either don't know they are going on or don't feel they are invited. So please if you are planning an event, can you put a notice in the WaRbler its free and delivered to every household. This way we can all join in to make these events even better.

John Rogers, Chairman



Society

- 1 People would like more events for the village. Possible fete, party in field, music in field, art exhibition, Street Fare.
- 2 Help needed to run and support events.
- 3 Do a village community event like the Scarecrow Hunt in Chalford or the cowhunt in Amberley. Bring the community together.
- 4 Events happen but not everyone knows they are going on, need better communications.
- 5 Form a history group in the village.
- 6 Support an amateur dramatics.
- 7 Village best garden competition.
- 8 A volunteer system to help the aged or disabled persons.
- 9 Adopt a gran / grand-dad: a scheme for old folks who would like a visitor.
- 10 We are not part of Stroud.



Energy Issues

- 1 Support for wind power.
- 2 Support for wind power but not wind farms.
- 3 Support for solar panels.
- 4 Grants for renewable energy installations needed.
- 5 Renewable energy schemes should be implemented on community buildings.
- 6 Drop planning restrictions on double glazing for listed buildings.

- 7 Use dead wood from local woods.
- 8 Work with local land owners on renewable energy projects.
- 9 Investigate energy self sufficiency.
- 10 Aim to become a transitional parish.
- 11 Oppose the Severn Barrage.
- 12 Make better use of water mills

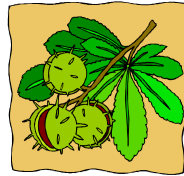
Facilities



- 1 Need to keep all existing facilities.
- 2 Must retain the school.
- 3 Village composter is a good idea.
- 4 Would like a skip for garden waste to reduce bonfires.
- 5 Need more plastic and cardboard recycling facilities in the village.
- 6 Would like a travelling cinema in the village hall.
- 7 Encourage more people to volunteer to help with the village shop.
- 8 More dog mess bins needed.
- 9 Another car park near church for functions there and village hall and for people in village without parking facilities.
- 10 Play area. Some new equipment, i.e. balancing beams and tunnels.
- 11 Make better use of existing facilities for village events
- 12 Include the church and chapel in the plan.

Natural Environment

- 1 Wild verges, yes, but also fruit trees and meadows.
- 2 Encourage wild verges, native hedge-rows Cold Aston and Wych Rissington have interesting schemes.
- 3 Could we ask Glos Highway to spray less? Then we could once again see our wildflowers.
- 4 Don't cut verges so much, nor the churchyard until the orchids are over.
- 5 Let's have some sheep in the churchyard.
- 6 Please don't mow the verges like a lawn.
- 7 Farmland and public access. Develop a plan a to educate the public in foot-path use and farming issues, dog waste, vandalism.
- 8 If we wish to keep fields/open land, we must support farming and respect same.
- 9 Whatever you do don't cut down good trees. The conker tree by the swing was presented by Ken and Kate Baynes (about 1976). It would be a pity not to preserve it.
- 10 Support for bee houses, Village adopt a beehive.
www.adoptabeehive.co.uk



- 11 We are quick to plant trees (e.g. fruit trees in playing field) but are loathe to attend to them. They are not developing well because the roots are surrounded by grass and weeds. A circle should be hoed around each.
- 12 Educate the schoolchildren to be more conscious of rubbish dropping. Keep the school area free of rubbish

Built Environment

- 1 Support sustainable (carbon neutral) homes. More important than prettifying a pretty Cotswold setting.
- 2 Self build should be supported as they build homes they want to live in. Distinct from developers who are after profit.
- 3 New properties – we need to encourage families to keep the village young and thriving.
- 4 Large developments should be opposed. But infill and small one property builds must be allowed.
- 5 Find out need for social and/or sustainable housing in the village and act accordingly.
- 6 Need more affordable housing.
- 7 Look to support our children with housing in their future.
- 8 We need to have social housing to ensure a balanced community.
- 9 We don't want Tricorn House in the village, thank you, it should be in keeping.

- 10 If we had less patios and (more) flowers useful for bees etc, we would all gain.
- 11 Support a Conservation area in Ruscombe.
- 12 Houses. Ideally new houses should complement the area and not stand out like a sore thumb. So Cotswold stone is good.
- 13 Rebuild Cotswold stone walls as it is part of our identity.



Travel

- 1 Need safer crossing for children.
- 2 Can we make some of the foot-paths cycle tracks so we can cycle with children to town?
- 3 Use single decker buses at non peak times.
- 4 Introduce bus services on Sunday.
- 5 Buses stop too early in the evening. Push for late bus around 10-10.30pm.
- 6 Stop parking on pavements.
- 7 Snow plans in the event of the village being cut off.
- 8 Needs some safe parking.

- 9 Need a 20mph speed limit especially at school times.
- 10 We need speed humps right across the road and a roundabout at the lane junction above St Paul's church.
- 11 Walk like Randwick 2000 steps.
- 12 Improve pavements.
- 13 Walk booklet – great idea. Shop could stock it and pub.
- 14 Have car club vehicle kept in car park.
- 15 Handrails for steep slopes.



If you want to get involved, a steering group will need to be formed to put the Plan together and take things forward. This is your chance as a community to look at what you would like and put your views forward.

There will be another event coming soon, so please look out for further information, This can be done either via the website, or on email and Helen's contact details are:

**Mrs Helen Dunn (Clerk)
23 Tennyson Road, Dursley, Glos
GL11 4PZ OR phone on
07941 171805
clerk@wrpc.org.uk**

Were you married in St. Paul's Church, Whiteshill?

If so, have you any photographs, wedding memorabilia, dresses, suites, etc., or even memories or anecdotes you would like to share with us?



We are holding a **'Harvest of Weddings' over the weekend of Saturday/Sunday, 9th/10th October** and invite you to help us stage a display of photographs, wedding memorabilia, etc. We might even have a competition 'Guess the Bride/Bridegroom in the picture?'

The week-end will conclude with a special Service of Celebration in the afternoon when you are invited to bring your 'wedding guests' and wear your wedding outfits (if they still fit!). There will also be an opportunity for you to re-affirm your marriage vows if you wish. Maybe your children or grandchildren would like to dress up as bridesmaids and page boys!



You are, of course also very welcome to participate even if you were not married at St. Paul's.

Let us have your ideas – or for more details please contact either

Val Regel on 01453 758835 or Christine at the Church Office 01453 759099.

R&WVSA report given at the Parish Council AGM

This October will be the start of the Ruscombe and Whiteshill Community Shops twelfth year, a venture that many predicted would never last. It is run entirely by unpaid volunteers, with an elected committee and the shop is still trading steadily and has a small financial cushion.

It stocks Organic, Vegetarian, Fair Trade, Eco products and alternative environmentally friendly cleaning products and offers locally produced products such as Winstones ice cream, Bottle Green cordials, bottled milk, free range and farm eggs and fruit and vegetables. Bread, pies and pasties are freshly baked daily on the premises. Like Harrods we will always try to satisfy a customer's request, but may have to draw the line at an elephant!

Earlier in the year we took on an undercover mission to check prices in other local small shops. It showed that the Village Shop can be less expensive than other local convenience stores. We were very pleased to find that as we do not have to pay wages we can continue to be very competitive.

Regular fundraising events and prize draws take place throughout the year, Pancake Races, Easter Fayre, Annual Sale, Halloween, ending the year with the Annual Christmas Fayre, and special refreshments are available in the coffee shop. At Halloween the adults often appear to be having more fun than the Children.

The committee would like to thank our customers for again being very generous in supporting our fundraising activities and donating goods, services and money towards shop repairs.

Activities funded a new shop sign and badly needed new front door. Unfortunately, as soon as the door was in place intruders broke in one night and badly damaged it. The alarm went off and the intruders fled empty handed.

The shop always DESPERATELY needs more volunteers. Unexpected sickness, holiday and other commitments of the volunteers mean that at times it has been extremely difficult to cover all the shifts. The shop has never had to close yet, but has come very close. Could you spare a couple of hours a week on a fairly regular basis, or be available occasionally to cover an unexpected empty slot. Volunteers' other commitments will always be taken into account and Shifts are very flexible,

The shop is open 9-5 during the week, 9-1 on Saturdays, and 9-11 on Sundays. So next time you run out of bread or other items why not pop round to the village shop, you will be saving on petrol and money, for who comes out of a supermarket spending less than £10 on items that they didn't know they needed.. Maybe you would like to order a regular newspaper to which 5p is added to cover costs. Why not stop for a coffee, cake or light meal in the Coffee Shop, have a chat and put the world to rights. You will be pleasantly surprised at the prices.

During the last heavy snowfall, the bread delivery van got stuck, and older children sledging on the playing field were commanded to act as Sherpas, ferrying bread to the shop. As the traffic was at a standstill a volunteer set forth heroically with a sledge across the fields to Stroud to collect the newspapers.

So to reduce your carbon footprint, help the environment, and help maintain a valuable facility, use or volunteer at your village shop. You will be sure of a welcome.

Phone: 01453 766277 for more info

Ruscombe Reckers

No! This is not an advert for a car spares business, although one could think otherwise, as once again my car has been pilfered for parts. I guess I would not mind or at least expect it if the car had been pilaged while I was in a big city, but it was parked outside my house in the quiet and remote village of Ruscombe. It would be difficult to blame this repeated removal of 'bits' on the traditional whipping boy of immigration, as there are very few 'foreigners' in the one street that makes up the village. So I am led to the conclusion that it can only be people who live around me, who see vehicles in the street as a ready source of spares. It is unlikely that I am the only person to have my property removed, so I would think that other parts providers would be happy to have this business shut down. Someone knows it is going on and it is up to them to realise that the neighbours are not a ready source of car parts. 'Recked'

PLEA FOR HELP—If anyone has any information about St Paul's Church which would be of help in producing a booklet about the church, please could you forward this to the Vicar. Many

Rev'd Denise Cole — Many in our community will remember the Rev'd Denise Cole with great affection for her faithful service and great kindness. The family and the Church hope to install a Stained Glass Window in the porch to remember her. This will cost £2,500. Thanks to an article and pledge form in "Stroud Life" and various kind pledges, the amount of £2,250 has so far been raised – this means only 1/10th of the total still remains. So if anybody would like to help us to raise the remaining £250 we would be most grateful. (Please contact Rev'd Brian WOOLLASTON on 01453 764757)

Parishes Flower Festival July 2011

St. Paul's Flower Ladies have accepted an invitation from Gloucester Cathedral to take part in the Parishes' Flower Festival in July 2011. In order to raise funds for the flowers etc. they hope to produce a small booklet of easy recipes to sell for a modest price. **(ALL RECIPE CONTRIBUTIONS MOST WELCOME.) Please contact Kaye on 01453 74777.**

Some amusing anagrams



PRESBYTERIAN:

When you rearrange the letters:
BEST IN PRAYER

ASTRONOMER:

When you rearrange the letters:
MOON STARER

DESPERATION:

When you rearrange the letters:
A ROPE ENDS IT

THE EYES:

When you rearrange the letters:
THEY SEE

GEORGE BUSH:

When you rearrange the letters:
HE BUGS GORE

New Yoga Class in Whiteshill

"I am delighted to be sharing the gift of Yoga with local residents. People come to classes for different reasons; to relieve stress, maintain health, find inner peace and feel more alive. The practice of Yoga offers these benefits in a very direct way and at the same time invites us to reconnect with life in a natural and creative way. I offer a simple approach which is suitable for beginners and experienced practitioners, comprising gentle movement, classic posture, breathing practice and deep relaxation". Yoga Practitioner and Whiteshill resident Stefan Cartwrite. He has taught Hatha Yoga and Meditation for 15 years and is a registered Yoga teacher (IYN, YRT) call 01453 767 061 to book a place.

Mondays 6:00 - 7:15 pm in Whiteshill and Ruscombe Village Hall

Whiteshill Guide & Scout Supporters Association
Summer BBQ
Fun for all the Family!

Refreshments and cakes

Saturday 10th July 2010
6:00 to 9:00pm

Ticket Price
£2 Adult
£1 Child
Inc Free Burger or Hot Dog & Drink
Contact Lisa on 01453 763789

Bouncy Castle
Tombola
Treasure Hunt
And much more!

Whiteshill Guide & Scout Hut
The Playing Field
(By the Village Shop)

Girlguiding UK

scouts

Parish Council Contacts

John Rogers (Chair)
Mrs Helen Dunn (Clerk)
23 Tennyson Road, Dursley, Glos GL11
4PZ OR phone Tel: 07941 171805
clerk@wrpc.org.uk
for Warbler articles by email please send
to: editwarbler@aol.com
**WEBSITE: www.wrpc.org.uk or
whiteshillandruscombe.org.uk**

**Your Whiteshill Guide &
Scout Supporters
Association Needs You!
at their ANNUAL GENERAL
MEETING on Tuesday
21st September 2010 at
7.30,
Whiteshill Guide and Scout Hut
(By the Village Shop)**

Agenda

Apologies
Previous Minutes
Chairpersons
Report
Treasurers
Report
Election of
Officers
AOB and
questions

**Want to learn
more? contact Lisa 01453 763785**



**HALL FOR HIRE—Old School Room
at Ruscombe Chapel recently re-
decorated and with ample parking
phone 758 019 for information and
bookings.**

ALL THE ACTIVITIES MAY
BE SUBJECT TO SUMMER
HOLIDAYS, SO PLEASE
CHECK WITH THE CON-
TACT NUMBERS SHOWN



VILLAGE HALL

MONDAY Line Dancing 15:00 to 16:00
New Yoga Class—6-7.15 ring Stefan Cart-
wright on 01453 767061
Easy Keep Fit 19:30 to 21:00 **NEW TERM
STARTS IN SEPTEMBER)** (Ring Lyn on 01453
766609 or 07773 493517)
TUESDAY Circuit Training 18:30 to 19:30
WEDNESDAY Art Class 14:00 to 16:00 **Pi-
lates** (contact **01453 764376** for details)
Circuit Training—9-10 from 7 July
THURSDAY Mother and Toddler Group 10:00
to 12:00 **Wives Group** First Thursday in
month 19:00 to 21:00 **Parish Council** 2nd
and 4th Thursday in month 19:30 to 22:00
FRIDAY Ballet 16:00 to 18:00 *For more de-
tails and booking enquiries please ring
759023*

WHITESHILL GUIDE & SCOUT HEADQUARTERS

MONDAY – Brownies - 18:00 to 19:30
Contact: Julie Jones – 821218
Guides – 19:40 to 21:10 **Contact: Jessica
Brereton – 762469**
TUESDAY – Tai Chi—2.00pm (contact
Angela King, Village Agent)
WEDNESDAY— Whist Drive—7.15 pm
Contact Ken Wood 01453 764175
THURSDAY
Beavers – 18:00 to 19:00
Contact – Sandie Withey 01453 765935
FRIDAY—Cubs—18.30-20.00
Contact: Ange Smith 01453 766827

WHITESHILL PLAYGROUP – Meet on four
mornings each week. **Contact: Sara on
824109 or Lisa on 752094.**

PRIVATE BOOKINGS -

The hall can be booked for children's parties,
clubs and societies. Excellent kitchen. Good
Parking and close to playing fields. **Contact:
David Howell - 762088**